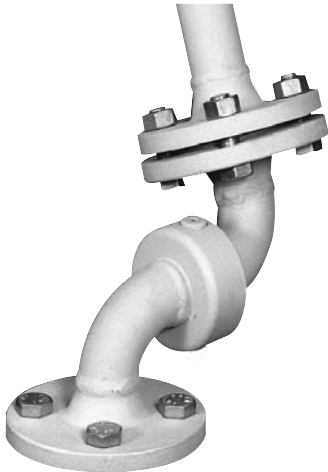


Swivel Joint • Type DG-01

DN 20 - DN 100



Instructions

General technical instructions must be observed. Subject to technical alterations and fluctuations caused by the production process. Number of revolutions for swivel and rotation movements ≤ 10 rpm. Swivel movements in several planes see catalogue pages 6 and 7. Sets of sealings and balls available individually as spare parts.

Application

- for liquid or gaseous media at high temperatures and pressures
- for slow swivel and rotation movements through 360°
- for rough operating conditions
 - in hydraulic flow pipes
 - at roll stands
 - in sewage plant
 - in steel mills
 - at hose drums
- for installation in flexible pipeline systems, for conveying media from a fixed point to any required flexible point
 - filling systems
 - loading and swivel arms
 - pipe joint shears
- use at test facilities
- special designs suitable for food products

Dimensions

Standard: DN 20 to DN 100
 Flanges: PN 16 to DIN 2501
 Others: possible to ANSI (ASA), BS etc.
 Welding end: to ISO recommendations

Swivel Joint

Structure

- stator (outer part) and rotor (inner part) joined by a single-row ball bearing
- for-life lubrication provided in the factory
- welded connection parts: welding ends, pipe bends or flanges

Materials

basic unit	welding end	flange
1.7225	1.0305	1.0460
1.4571	1.4571	1.4571

Standard sealings

- PTFE compound sealings

Special sealings

- additional inner sealing for heavily polluted media
- medium sealings for oxygen, steam and food products

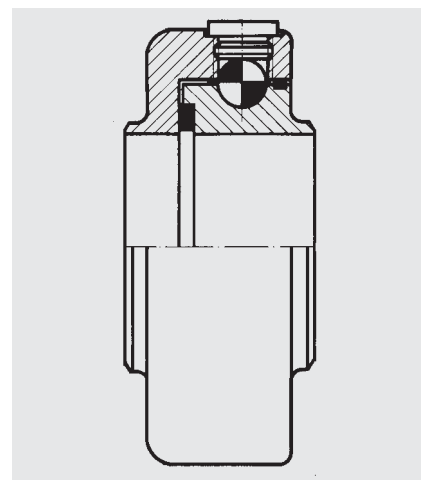
Pressure rating

- PN 16 (1.7225) with flanges
- PN 100 (1.7225) with welding ends
- PN 16 (1.4571) with flanges
- PN 40 (1.4571) with welding ends

Surface protection

- Gas nitration
- Corrosion-protection primer

Design

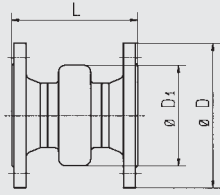


Type DG-01 basic unit
with single-row ball bearing

STENFLEX Swivel Joint type DG-01 installed in a pump test facility

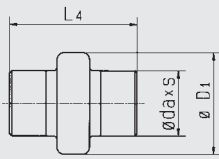


Form 11 F / flange connection*



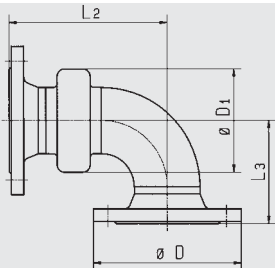
DN	ø D1 mm	1.0460/1.4571/PN 16	
		ø D mm	L mm
20	72	105	137
25	78	115	142
32	88	140	146
40	96	150	150
50	118	165	166
65	133	185	171
80	139	200	181
100	164	220	185

Form 11 S / welding ends



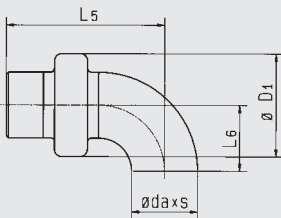
DN	ø D1 mm	1.0305/PN 100			1.4571/PN 40		
		ø da mm	s mm	L ₄ mm	ø da mm	s mm	L ₄ mm
20	72	26,9	2,9	161	26,9	2,3	161
25	78	33,7	3,2	166	33,7	2,6	166
32	88	42,4	3,6	166	42,4	2,6	166
40	96	48,3	3,6	166	48,3	2,6	166
50	118	60,3	4,0	176	60,3	2,9	176
65	133	76,1	5,6	181	76,1	2,9	181
80	139	88,9	5,6	181	88,9	3,2	181
100	164	114,3	6,3	181	114,3	3,6	181

Form 12 F / flange connection*



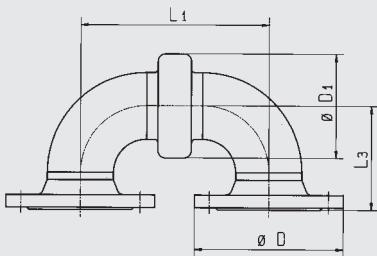
DN	ø D1 mm	1.0460/PN 16			1.4571/PN 16		
		ø D mm	L ₂ mm	L ₃ mm	ø D mm	L ₂ mm	L ₃ mm
20	72	105	128	70	105	128	70
25	78	115	129	66	115	142	79
32	88	140	138	75	140	154	91
40	96	150	146	83	150	165	102
50	118	165	172	99	165	197	124
65	133	185	190	112	185	221	143
80	139	200	207	129	200	245	167
100	164	220	235	157	220	285	207

Form 12 S / welding ends



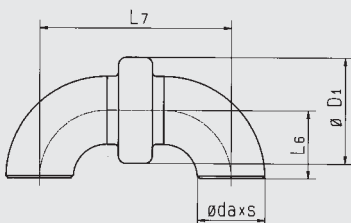
DN	ø D1 mm	1.0305/PN 100				1.4571/PN 40			
		ø da mm	s mm	L ₅ mm	L ₆ mm	ø da mm	s mm	L ₅ mm	L ₆ mm
20	72	26,9	2,9	140	29	26,9	2,3	140	29
25	78	33,7	3,2	141	25	33,7	2,6	154	38
32	88	42,4	3,6	148	32	42,4	2,6	164	48
40	96	48,3	3,6	154	38	48,3	2,6	173	57
50	118	60,3	4,0	177	51	60,3	2,9	202	76
65	133	76,1	5,6	195	64	76,1	2,9	226	95
80	139	88,9	5,6	207	76	88,9	3,2	245	114
100	164	114,3	6,3	233	102	114,3	3,6	283	152

Form 13 F / flange connection*



DN	ø D1 mm	1.0460/PN 16			1.4571/PN 16		
		ø D mm	L ₁ mm	L ₃ mm	ø D mm	L ₁ mm	L ₃ mm
20	72	105	119	70	105	119	70
25	78	115	116	66	115	142	79
32	88	140	130	75	140	162	91
40	96	150	142	83	150	180	102
50	118	165	178	99	165	228	124
65	133	185	209	112	185	271	143
80	139	200	233	129	200	309	167
100	164	220	285	157	220	385	207

Form 13 S / welding ends



DN	ø D1 mm	1.0305/PN 100				1.4571/PN 40			
		ø da mm	s mm	L ₆ mm	L ₇ mm	ø da mm	s mm	L ₆ mm	L ₇ mm
20	72	26,9	2,9	29	119	26,9	2,3	29	119
25	78	33,7	3,2	25	116	33,7	2,6	38	142
32	88	42,4	3,6	32	130	42,4	2,6	48	162
40	96	48,3	3,6	38	142	48,3	2,6	57	180
50	118	60,3	4,0	51	178	60,3	2,9	76	228
65	133	76,1	5,6	64	209	76,1	2,9	95	271
80	139	88,9	5,6	76	233	88,9	3,2	114	309
100	164	114,3	6,3	102	285	114,3	3,6	152	385

*PN 40 flange connection possible on request.
Materials data stated for basic units.