

**REED SWITCH**

01/04-13 vers.1

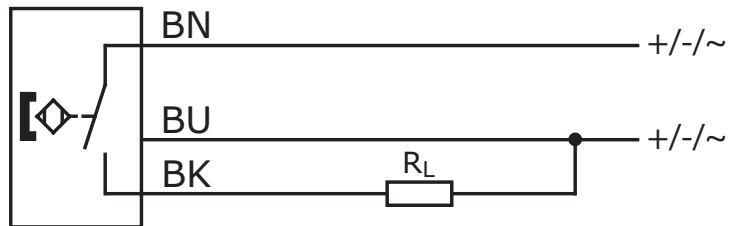


**ART. NO.**

3 m PUR	0 830 100 629
5 m PUR	0 830 100 630

Reed switch, synthetic, IP 67, w/o cable

**MEASUREMENT FORM (MM)**



Core colors: bn = brown, bk = black and bu = blue

Conduct	Voltage	Power (max)	Connention	Plugs
3	10 - 30 V DC	100 mA DC	3 m PUR	-
3	10 - 30 V DC	100 mA DC	5 m PUR	-