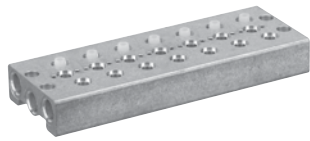


Manifold block, Series RA18

► Service product



00108962

Ambient temperature min./max.	+0 °C / +80 °C
Medium temperature min./max.	+0 °C / +80 °C
Medium	Compressed air
Working pressure min./max.	-0.9 bar / 10 bar
Mounting screw	with hexagon socket
Direction of pneumatic port (1)	On the side
Exhaust (3,5)	With directional exhaust (3/5) Ports separated

Materials:	
Subbase	Aluminum
Seals	Acrylonitrile Butadiene Rubber

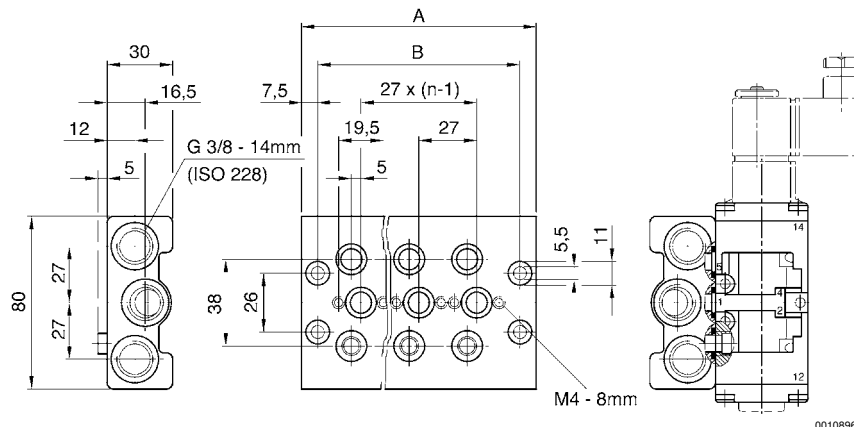
Technical Remarks

- The pressure dew point must be at least 15 °C under ambient and medium temperature and may not exceed 3 °C.
- The oil content of air pressure must remain constant during the life cycle.
- Use only the approved oils from Bosch Rexroth, see chapter „Technical information“.

Compressed air connection		Number of valve positions	Weight	Part No.
Input	Exhaust			
[1]	[3 / 5]		[kg]	
G 3/8	G 3/8	2	0.306	1825503206
		3	0.495	1825503207
		4	0.61	1825503208
		5	0.735	1825503209
		6	0.86	1825503210
		7	0.985	1825503211
		8	1.11	1825503212
		9	1.23	1825503213
		10	1.35	1825503214
		11	1.47	1825503215
		12	1.595	1825503216

Scope of delivery incl. seal and mounting screws

Dimensions



00108964

Manifold block, Series RA18

► Service product

Part No.	A	B									
1825503206	85	70									
1825503207	112	97									
1825503208	139	124									
1825503209	166	151									
1825503210	193	178									
1825503211	220	205									
1825503212	247	232									
1825503213	274	259									
1825503214	301	286									
1825503215	328	313									
1825503216	355	340									

Archive product:
Do not use in new constructions!