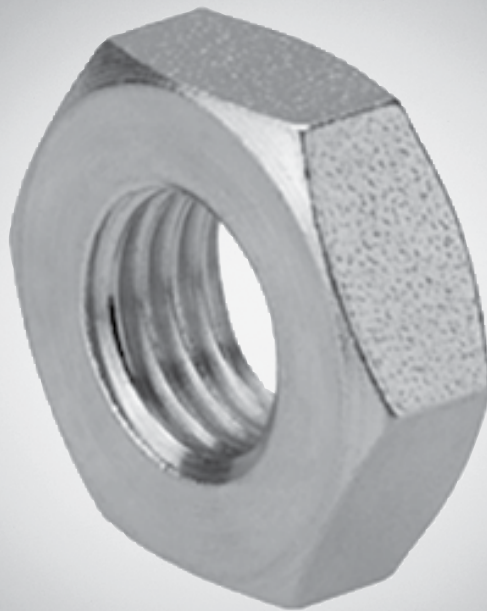


Cylinder accessories → Piston rod mountings, series CM2

Nuts for piston rod mounting

Brochure



Cylinder accessories → Piston rod mountings, series CM2

Nuts for piston rod mounting



MR9, Nut for piston rod

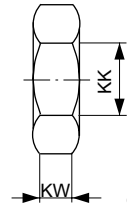
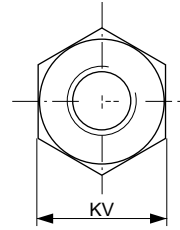
3

Cylinder accessories → Piston rod mountings, series CM2

MR9, Nut for piston rod



00105168



00105192

Part No.	KK	KV	KW	Material	Surface	Weight [kg]				
1823300033	M6	10	3.2	Steel	galva- nized	0.004				
1823300034	M8	13	4	Steel	galva- nized	0.005				
8103040224	M10	17	8	Steel	galva- nized	0.011				
1823300020	M10x1,25	17	6	Steel	galva- nized	0.01				
8103060064	M12	19	10	Steel	galva- nized	0.017				
8103190344	M12x1,25	19	7	Steel	galva- nized	0.012				
1823300030	M16x1,5	24	8	Steel	galva- nized	0.017				
8103040344	M20x1,5	30	16	Steel	galva- nized	0.06				
8103190394	M24x2	36	12	Steel	galva- nized	0.06				
1823300029	M27x2	41	13.5	Steel	galva- nized	0.108				
8103190414	M36x2	55	18	Steel	galva- nized	0.175				
8103190424	M42x2	65	21	Steel	galva- nized	0.37				
8103190434	M48x2	75	24	Steel	galva- nized	0.4				
3330310000	M4	7	2.2	Stainless steel	-	0.001				
8103190644	M6	10	3.2	Stainless steel	-	0.003				
8103190164	M8	13	4	Stainless steel	-	0.006				
8103190464	M10x1,25	16	5	Stainless steel	-	0.008				
3590304000	M12x1,25	18	6	Stainless steel	-	0.02				
3590305000	M16x1,5	24	8	Stainless steel	-	0.03				
3590308000	M20x1,5	30	10	Stainless steel	-	0.05				
2990600303	M10x1,25	17	5	Stainless steel, acid-proof	-	0.01				
2990600304	M12x1,25	19	6	Stainless steel, acid-proof	-	0.02				
2990600305	M16x1,5	24	8	Stainless steel, acid-proof	-	0.03				
2990600308	M20x1,5	30	10	Stainless steel, acid-proof	-	0.05				
2990600312	M27x2	42	12	Stainless steel, acid-proof	-	0.07				
2990600316	M36x2	50	16	Stainless steel, acid-proof	-	0.15				

Cylinder accessories → Piston rod mountings, series CM2**MR9, Nut for piston rod**

Part No.	KK	KV	KW	Material	Surface	Weight				
						[kg]				
2990600325	M42x2	60	21	Stainless steel, acid-proof	-	0.3				

Bosch Rexroth Pneumatics GmbH
Ulmer Straße 4
D - 30880 Laatzen
Phone +49 511 2136 - 0
Fax +49 511 2136 - 2 69
info@rexrothpneumatics.com
www.rexrothpneumatics.com

Your contact:

Canada

Bosch Rexroth Pneumatics Inc.
3426 Mainway Drive
Burlington, Ontario L7M 1A8
Tel. +1 905 332-0399
Fax +1 905 332-8596

Australia

Bosch Rexroth Pty. Ltd.
3 Valediction Road
Kings Park NSW 2148
Sydney
Tel. +61 2 9831-7788
Fax +61 2 9831-5553

U.S.A.

Bosch Rexroth Pneumatics Corp.
1953 Mercer Road
Lexington, KY 40511
US
Tel. +1 859 254-8031
Fax +1 859 254-4188

Great Britain

Bosch Rexroth Pneumatics Ltd.
Broadway Lane
Cirencester, GL7 5UH
Tel. +44 0845 60-30025
Fax +44 1285 86-3126

further contacts:
www.rexrothpneumatics.com/en/contact

The data specified above only serve to describe the product. No statements concerning a certain condition or suitability for a certain application can be derived from our information. The information given does not release the user from the obligation of own judgment and verification. It must be remembered that our products are subject to a natural process of wear and aging.

© This document, as well as the data, specifications and other informations set forth in it, are the exclusive property of Bosch Rexroth Pneumatics GmbH. Without their consent it may not be reproduced or given to third parties.

Subject to modifications.

Online-PDF

28-10-2013