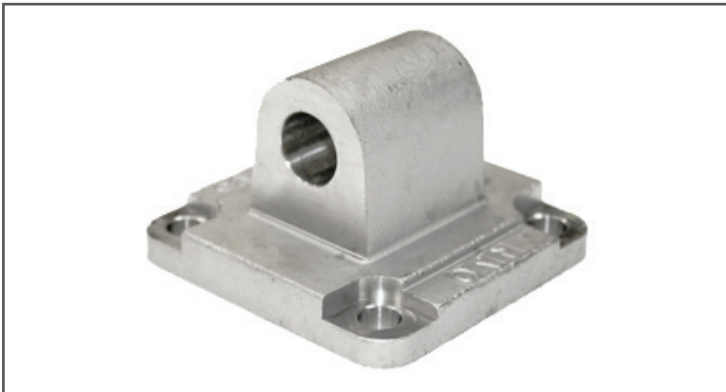


DREJEBESLAG - RUSTFRI STÅL - STØBT

01/04-13 vers.1

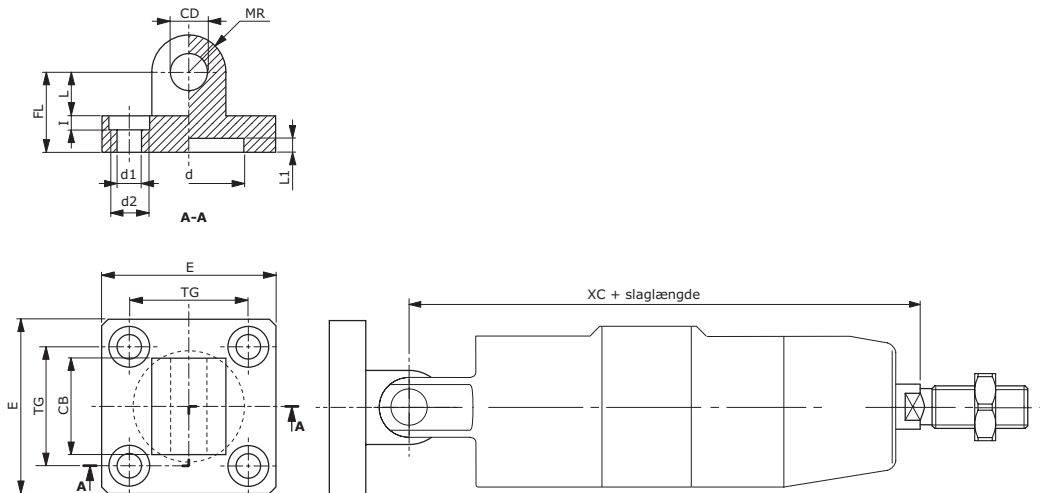


VARENUMMER

Ø32	U1903212E
Ø40	U1904012E
Ø50	U1905012E
Ø63	U1906312E
Ø80	U1908012E
Ø100	U1910012E

Drejebeslag, støbt, i rustfrit stål, AISI 304, incl. montageskruer, for cylinder Ø32 - Ø100, DIN/ISO 15552 (VDMA 24562).

MÅLESKEMA (MM)



Cyl. Ø	CB*	CD*	d*	d1*	d2*	E	FL	I	L*	L1*	MR*	TG*	XC*	kg
32	26	10	30	Ø6,6	11	45	22	4,0	12	4,5	10	32,5	142	0,15
40	28	12	35	Ø6,6	11	55	25	4,5	15	4,5	12	38,0	160	0,25
50	32	12	40	Ø9,0	15	65	27	4,0	16	4,5	12	46,5	170	0,40
63	40	16	45	Ø9,0	15	75	32	4,5	20	4,5	16	56,5	190	0,55
80	50	16	45	Ø11,0	18	95	36	6,0	20	4,5	16	72,0	210	1,00
100	60	20	55	Ø11,0	18	115	41	6,0	25	4,5	20	89,0	230	1,60

* = DIN/ISO norm. mål.