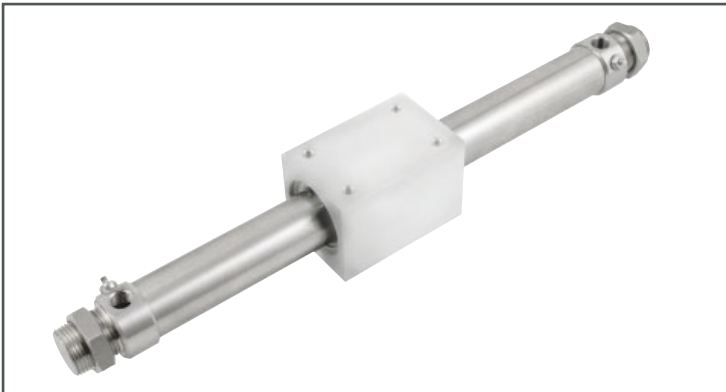


Ø20 - Ø40 - RODLESS CYLINDER

Type 4040

27/03-17 Vers. 4



ART. NO.

U020 0000 4040
U025 0000 4040
U032 0000 4040
U040 0000 4040

Rodless cylinder (Ø20 - Ø40):

Cylinder 4040 is a standard UNIC Stainless Steel Cylinder® without piston rod. Cylinder 4040 is equipped with an adjustable end stroke cushioning and fitted with nitrile rubber (NBR) / polyurethane (PU) packings.

Max pressure: 10 bar.

Temperature: -20°C til +80°C

Standard Stroke: 10-500 mm.

MATERIAL

Housing: POM-C FG (Food approved)
PTFE (Heat-resistant version)
Cylinder pipe and end caps: AISI 304 / (WST. 1.4301)

CHEMICAL RESISTANCE

The cylinder is delivered as chemical-resistant.

ASSEMBLY

All cylinders are assembled by thread and are therefore easy to service.

HEAT-RESISTANT +150°C

* On request.

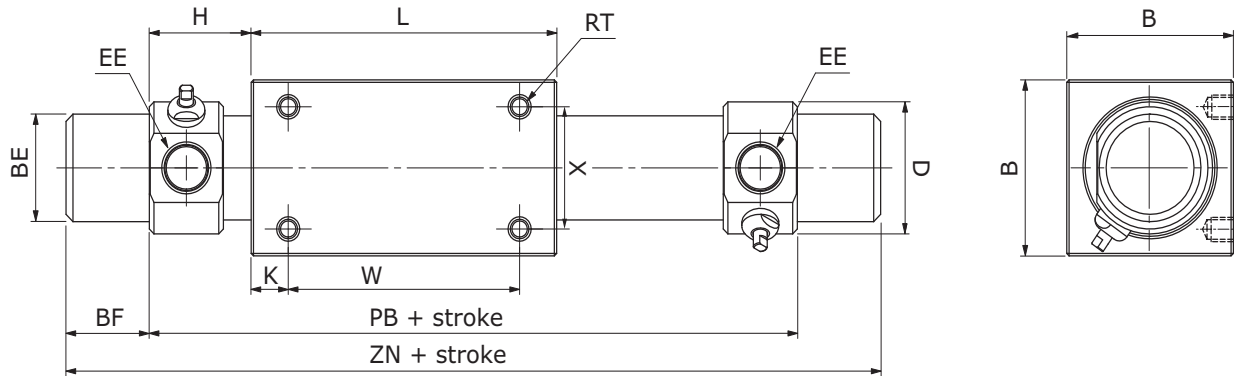
ORDER SAMPLE

Order sample for heat-resistant and chemical-resistant cylinder.

Heat-resistant cylinder: U025 0050 4040H (* On request)

MEASUREMENT FORM (MM)

Type 4040



Cyl.Ø	EE	B	BF	H	D	K	L	RT	BE	PB	W	X	ZN
20	1/8"	36	18	27	19	8	66	M4	M22x1,5	104	50	25	140
25	1/8"	46	21	30	20,5	10	70	M5	M22x1,5	109	50	30	151
32	1/8"	60	20	33,6	22	15	80	M6	M30x1,5	135	50	40	175
40	1/4"	70	22	46	29	16	92	M6	M38x1,5	148	60	40	192

THEORETICAL CYLINDER FORCES

IN NEWTON

Cyl. Ø	Piston area cm ²	2 bar	3 bar	4 bar	5 bar	6 bar	7 bar	8 bar	9 bar	10 bar
20	3,14	58	82	109	136	164	205	218	246	273
25	4,90	88	129	172	216	259	333	345	388	421
32	8,04	156	212	282	352	422	493	563	634	704
40	12,5	245	333	444	554	655	776	887	998	1109

LOAD AND TORQUE

Cyl. Ø	Horizontal load W (kg)	Safe moment Mp (kgf · m)
20	4,7	2,45
25	6,8	3,92
32	9,7	8,83
40	15,8	13,7

