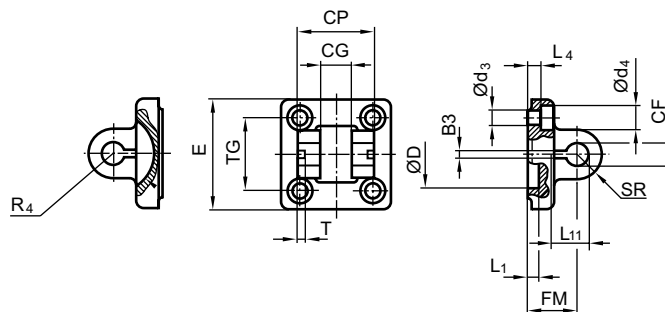


Cylinder Accessories ▶ Cylinder mountings; series CM1

Clevis mounting, Series AB6

▶ Cylinder mounting in accordance with ISO 15552



00105819

24547

Scope of delivery: clevis mounting incl. pivot pins and mounting screws

Part No.	Piston Ø	B3 ±0,2	Ø CF F7	CG D10	CP d12	Ø d3	Ø d4	Ø D	E	FM ±0,2	L1 1)	L4 ±0,5
1827001593	32	3.3	10	14	34	6.6	11	30	49	22	4.5	5.5
1827001594	40	4.3	12	16	40	6.6	11	35	55	25	4.5	5.5
1827001595	50	4.3	16	21	45	9	15	40	67	27	4.5	6.5
1827002024	63	4.3	16	21	51	9	15	45	77	32	4.5	6.5
1827001597	80	4.3	20	25	65	11	18	45	97	36	4.5	10
1827001598	100	4.3	20	25	75	11	18	55	117	41	4.5	10
1827001599	125	6.3	30	37	97	14	20	60	140	50	7	10
1827001600	160	6.3	35	43	122	18	26	65	180	55	10	10
1827001601	200	6.3	35	43	122	18	26	75	220	60	10	11
1827001602	250	8.3	40	49	125	22	33	90	280	70	12	11
5239013432	320	8.3	50	60	150	26	36	110	340	80	11	15

Part No.	L11 -0,5	R4	SR	T ±0,2	TG	Note						
1827001593	16.5	17	11	3	32,5 ±0,2	2)						
1827001594	18	20	12	4	38 ±0,2	2)						
1827001595	23	22	15	4	46,5 ±0,2	2)						
1827002024	23	25	15	4	56,5 ±0,2	2)						
1827001597	27	30	20	4	72 ±0,2	2)						
1827001598	27	32	20	4	89 ±0,2	2)						
1827001599	40	42	26	6	110 ±0,3	2)						
1827001600	45	46	32.5	6	140 ±0,3	3) 4)						
1827001601	45	49	32.5	6	175 ±0,3	3) 4)						
1827001602	53	55	40	8	220 ±0,3	3) 4)						
5239013432	69	65	50	8	270 ±0,3	3) 4)						

1) Min.

2) Material: Aluminum (forged)

3) Material: Nodular graphite iron

4) Surface: galvanized