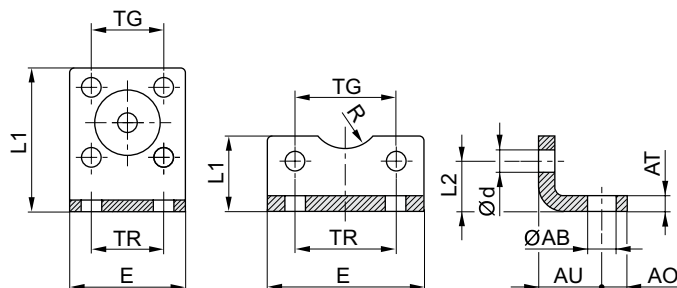


Foot mounting, Series MS1



00105808



Ø16

Ø20 - 320

00126387

Scope of delivery: 2 foot mountings incl. mounting screws

Part No.	Piston Ø	For series	ØAB	AO	AT	AU ±0,2	Ød	E	L1	L2
1821332053	16	KPZ CCI	5.5	5	3	13	4.5	29	35.5	13
1827002284	20	KPZ CCI	6.6	6	4	16	5.4	36	22	16
1827002285	25	KPZ CCI	6.6	6	4	16	5.4	40	23	17
3682202000	25	ICL 167	7	8	4	22	5.5	40	21	11.5
1827002286	32	KPZ	6.6	8	5	18	6.6	50	24	16
1827001271	32	ICL CCI PRA TRB CVI	7	8	4 ±0,3	24	6.6	48	25	15.5
3662203000	32	167	7	8	5	24	5.5	47	26	16
1827002287	40	KPZ	9	8	5	20	6.6	60	29.5	21.5
1827001272	40	ICL CCI PRA TRB CVI	10	10	4 ±0,3	28	6.6	56	26	17
3662204000	40	167	9	11	5	31	6.6	56	28	16
1827002288	50	KPZ	9	8	6	24	9	68	30	22
1827001273	50	ICL CCI PRA TRB CVI	10	11	5 ±0,3	32	9	68	32	21.5
3662205000	50	167	9	12	6	33	6.6	63	35	22
1827002289	63	KPZ	11	12	6	27	9	84	39	28.5
1827001498	63	ICL CCI PRA TRB CVI	10	13	5 ±0,3	32	9	78	34	21.5
3662206000	63	167	9	12	6	36	9	81	40	20.5
1827002290	80	KPZ	11	12	8	30	11	102	36.5	24.5
1827001275	80	ICL CCI PRA TRB CVI	12	16	6 ±0,5	41	11	98	47	27
3662208000	80	167	12	15	8	43	9	95	45	26.5
1827002291	100	KPZ	13.5	12	8	33	11	123	38.5	26.5

Foot mounting, Series MS1

Part No.	Piston Ø	For series	ØAB	AO	AT	AU ±0,2	Ød	E	L1	L2
1827001276	100	ICL CCI PRA TRB CVI	14.5	19	6 ±0,5	41	11	117	52	26.5
3662210000	100	167	14	17	10	43	11	115	50	26
1827001310	125	ICL PRA TRB CVI	16.5	20	8 ±1,0	45	13.5	144	69	35
1827001457	160	ITS TRB CVI	18.5	23	10 ±1,0	60	17.5	185	100	45
1827001458	200	ITS TRB CVI	24	26	12 ±1,0	70	17.5	220	120	47.5
1827001459	250	ITS TRB	28	33	20 ±1,0	75	22	280	135	55
5239010502	320	ITS	35	45	23 ±1,0	85	26	350	200	65

Part No.	Piston Ø	R	TG	TR	Standardiza- tion					
1821332053	16	8	18 ±0,2	18	-					
1827002284	20	10	22 ±0,2	22	-					
1827002285	25	11	26 ±0,2	26	-					
3682202000	25	13.5	27	26	-					
1827002286	32	-	32	32	-					
1827001271	32	15	32,5 ±0,2	32	ISO 15552					
3662203000	32	15	32	32	-					
1827002287	40	-	42	42	-					
1827001272	40	17.5	38 ±0,2	36	ISO 15552					
3662204000	40	20	40	36	-					
1827002288	50	-	50	50	-					
1827001273	50	20	46,5 ±0,2	45	ISO 15552					
3662205000	50	23	46	45	-					
1827002289	63	-	62	62	-					
1827001498	63	22.5	56,5 ±0,2	50	ISO 15552					
3662206000	63	23	59	50	-					
1827002290	80	-	82	82	-					
1827001275	80	22.5	72 ±0,2	63	ISO 15552					
3662208000	80	26	73	63	-					
1827002291	100	-	103	103	-					
1827001276	100	27.5	89 ±0,2	75	ISO 15552					
3662210000	100	32	90	75	-					
1827001310	125	30	110 ±0,3	90	ISO 15552					
1827001457	160	32.5	140 ±0,3	115	ISO 15552					
1827001458	200	37.5	175 ±0,3	135	ISO 15552					
1827001459	250	45	220 ±0,3	165	ISO 15552					
5239010502	320	55	270 ±0,3	200	ISO 15552					

Material: Steel
Surface: galvanized