

SMOOTH ADAPTER NO. A2 - STAINLESS STEEL

11/10-13 Vers. 2



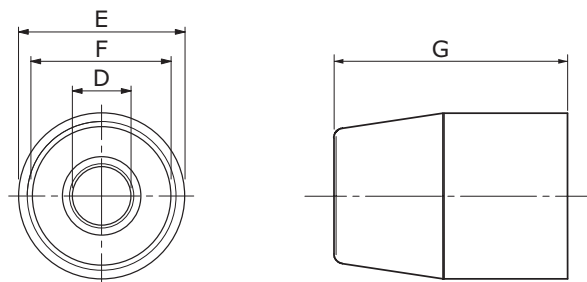
ART. NO.

Ø25	U1902549-48
Ø32	U1903249-48
Ø40	U1904049-48
Ø50	U1905049-48
Ø63	U1906349-48
Ø80	U1908049-48
Ø100	U1910049-48
Ø125	U1912549-48

Smooth adapter, No. A2, stainless steel AISI 304 for Ø32 – Ø125 cylinders

It may be advantageous to fit an extra front adapter if the cylinder is used in an aggressive environment that leaves deposits on the piston rod. The adapter is, therefore, fitted with a highly chemical-resistant and hard scraper made of PTFE. When ordering a cylinder with adapter, add the letter "A2" to the end of the product number.

MEASUREMENTFORM (MM)



Cyl. Ø	D	E	F	G	kg	Wear-parts
25	Ø10	26,8	M22x1,5	45,5	0,08	U1902542-P
32	Ø12	33,6	M30x1,5	47,0	0,16	U1903242-P
40	Ø16	41,6	M36x1,5	50,0	0,30	U1904042-P
50	Ø20	52,4	M42x1,5	63,0	0,45	U1905042-P
63	Ø20	65,4	M42x1,5	63,0	0,60	U1906342-P
80	Ø25	86,0	M55x1,5	75,0	1,10	U1908042-P
100	Ø25	106,0	M55x1,5	81,0	2,00	U1910042-P
125	Ø32	132,0	M60x2,0	105,0	5,00	U1912542-P

* = DIN/ISO norm. measurements